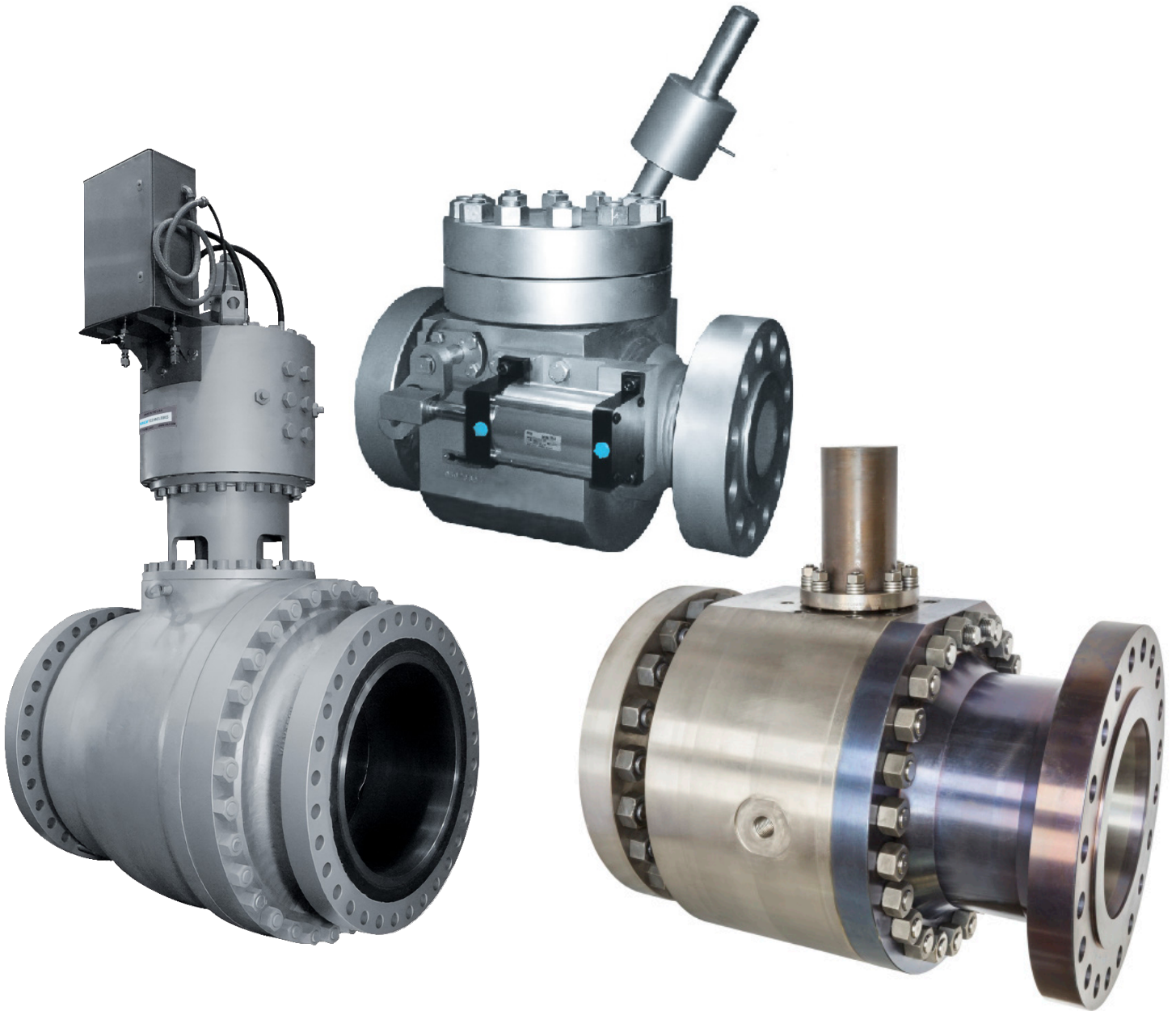


VALV TECHNOLOGIES



Specialty Valve Solutions for the Mining Industry

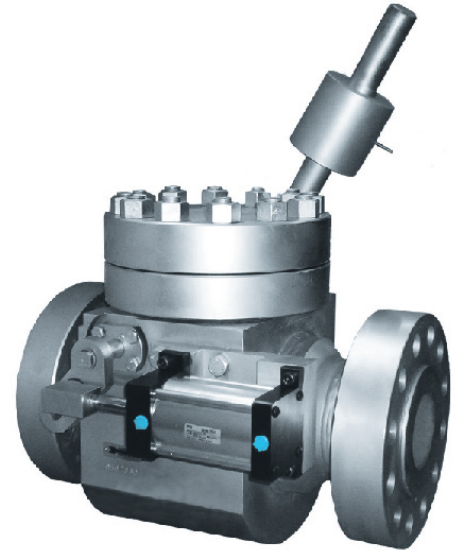
AbrasoCheck®, AbrasoTech® & AbrasoBlock®

Specialty Valve Solutions

ABRASOCHECK®

High Pressure Positive Displacement Pump Slurry Check Valve.

ValvTechnologies' ABRASOCHECK® slurry check valve is an upgrade of a product that has been used successfully in service for more than 30 years at the Savage River Iron Concentrate Pumping Plant in Tasmania. ValvTechnologies has re-engineered and improved the design of this product to be in line with our own technology for materials, coatings and manufacturing improvements. The combination of the ValvTechnologies' ABRASOCHECK® slurry check valve and the ValvTechnologies ABRASOTECH® slurry ball valve provides zero-leakage isolation for maintenance of positive displacement pumps.



- ASME Class 600 - 1500
- 4" – 24"
- Zero leakage isolation



- ASME Class 150 - 2500
- 1/2" – 40"

ABRASOTECH®

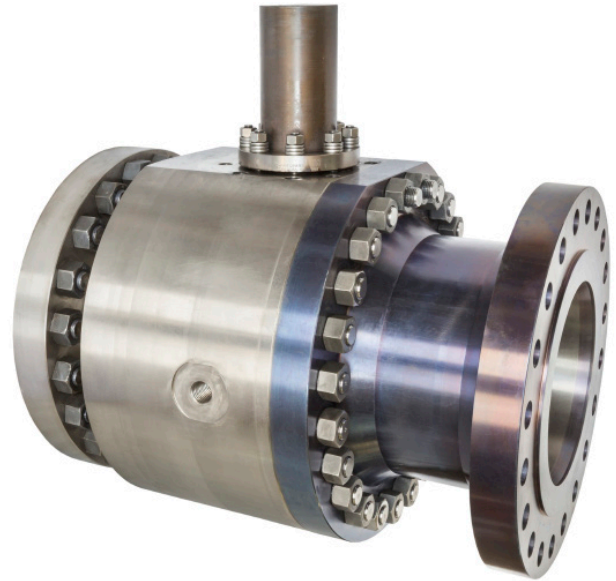
Slurry Transport Solution. Erosion & Corrosion Resistant.

The ValvTechnologies ABRASOTECH® valve is the result of extensive experience in providing reliable valves for the transportation of slurries in cross country pipelines. With an installed base of over 8,700 slurry service valves worldwide, ValvTechnologies is the established leader in these applications. The ABRASOTECH® valve is offered in carbon and stainless steel materials. The valves' internals can be protected against erosion and corrosion with the use of HVOF RiTech™ ceramet coating and metallic or urethane liners.

ABRASOBLOCK®

Autoclave Isolations Solution. Erosion & Corrosion Resistant.

The AbrasoBlock® valve is based on ValvTechnologies' V Series Product. It incorporates the V Series' proven seat supported design which provides improved performance far beyond the capability of separate seat design valves which have internal leak paths around the seat rings leading to accelerated slurry erosion and wear. ValvTechnologies' design and construction delivers the extra safety margin so crucial to maintaining productivity. Customers benefit by realizing increased performance, less downtime and lower maintenance. The ValvTechnologies' ball valve design includes integral seats, Rhinoite® hard coatings, blowout-proof stem and live-loaded packing.



- ASME Class 600 - 1500
- 4" – 24"
- Zero leakage isolation

Corporate Office & Manufacturing Plant
ValvTechnologies, Inc.
5904 Bingle Road
Houston, Texas 77092 U.S.A

Phone +1 713 860 0400
sales@valv.com
www.valv.com